

Download & Operating Instructions for Key Links Digital Platforms



Windows PC



Contents

1. Windows PC

- ▶ Windows PC Requirements
- ▶ Getting Started
- ▶ Features

Minimum Requirements

Minimum Requirements

Hardware Requirements

- Intel Pentium Dual Core with at least 1.6GHz and above processors / AMD Athlon II with at least 1.8Ghz and above
- Minimum 2GB RAM, Recommended 4GB RAM
- Minimum 5GB of available hard-disk space (Application)
- Recommended 10GB of available hard disk space for title downloads
- 3D class Video Card with 256 MB of memory or higher.
(Please ensure that the video card driver supports OpenGL version 1.5 or higher)
- Internet Connection for downloads and data sync.
- Microphone & Speaker for voice recording and playback

Key Links is not supported for use on Netbooks.

Software Requirements

- Microsoft Windows® XP (SP2) / Windows® Vista Windows 7 / Windows® 8 running Media Player 10 or above
- .NET Framework Client version 4.0
- SQL Server Compact 3.5 SP2
- Windows installer 3.1 and above
- Windows Media Player 10 and above

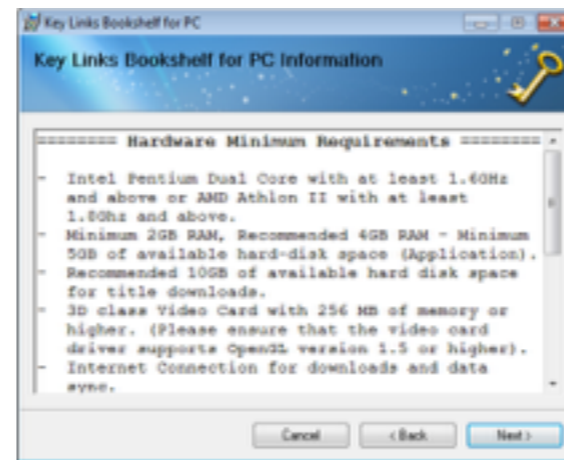
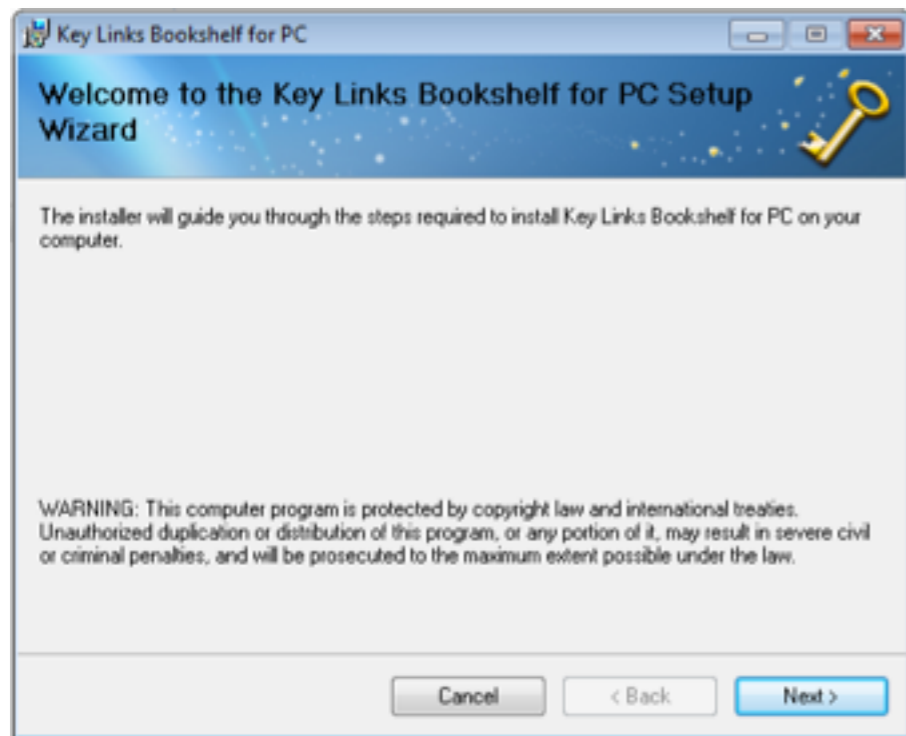
The Key Links PC Bookshelf will also run on 64bit versions of Windows, but it will run as a 32bit application.

To continue, the bookshelf application can be downloaded from <http://www.keylinksdigital.com/pcrequirements.html>

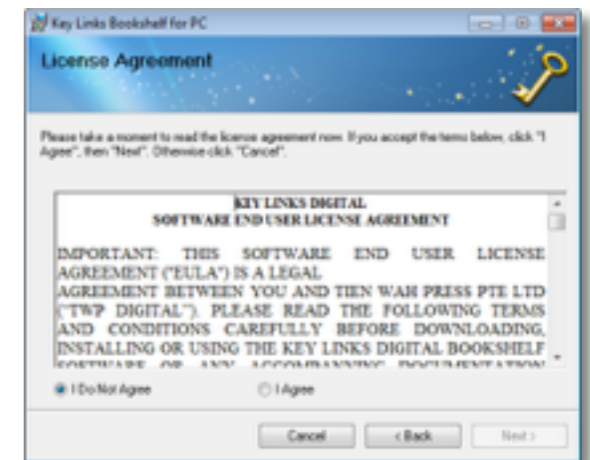
Windows PC: Getting Started

Click to unzip and install the application once it has been fully downloaded

An installation Wizard will help guide users through the installation process

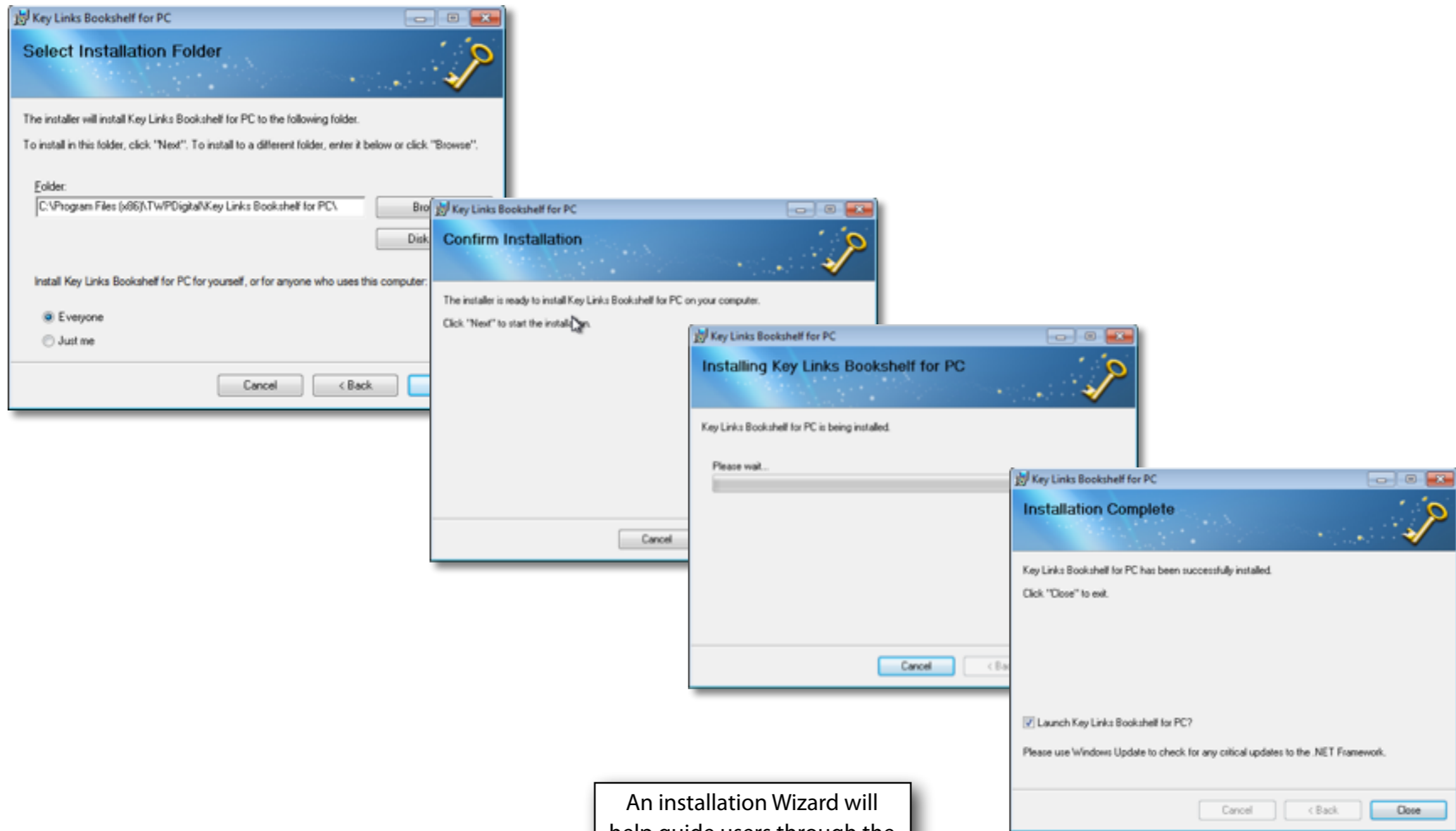


Minimum Requirements



EULA Acceptance

Windows PC: Getting Started



An installation Wizard will help guide users through the installation process

Windows PC: Getting Started

An internet connection is required for first time initialisation and login.



Windows PC: Getting Started



Upon successful installation, users will be prompted to login

Windows PC: Getting Started



Fluency

Early

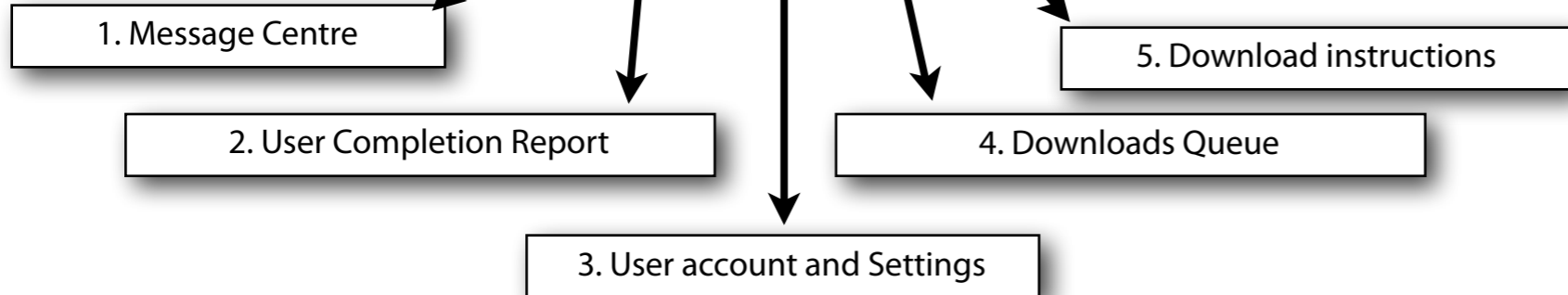
Emergent

Click on the colour tabs to switch between series

Windows PC: Getting Started



1. Allows teachers and students of a group to send messages to each other
2. Shows the user's progress
3. Account details and change password screen
4. Shows the titles awaiting download
5. Instructions to download and a guide of what the different colour tones of the covers mean



Windows PC: Message Centre



1. Messages received and sent will be listed in this section
2. Click to refresh messages
3. Click to create a new message

1. Message Display

2. Refresh Message List

3. Create New Message

Users will need to be connected to the internet to send, receive and sync messages

Windows PC: User Completion Report



Touch to expand report

Mouse over here to reveal student's text



Teacher account provides student report by classroom

The User Completion Report gives an overview of the student's progress.

Windows PC: Account and Setting page

The screenshot shows the 'Key Links Bookshelf' interface. At the top, there is a 'TWP' logo and a cartoon monkey. Below the logo is a navigation bar with three buttons: 'Account Details', 'Personal Details', and 'My Books'. The 'Account Details' button is selected, and its corresponding page is displayed in the main content area. This page contains a form with the following fields: 'User Name' (tds1), 'Current Password', 'New Password', and 'Confirm Password'. A 'Submit' button is located below these fields. At the bottom of the form is a 'Logout' button. On the left side of the interface, there is a blue ribbon menu with three buttons: 'About', 'Account', and 'Settings'. The 'Settings' button is highlighted. A callout box points to the 'Settings' button with the text 'Tap here to amend bookshelf settings'. Another callout box points to the 'My Books' button with the text 'Shows history of downloaded titles'. A third callout box points to the 'Account Details' button with the text 'Shows Account holder's details'. A fourth callout box points to the 'Account Details' button with the text 'Login and password change page'. At the bottom of the page, there is a footer with the text 'on : 5/29/2013 8:54:13 PM' and 'Version: 1.0.0.28'. A 'Key Links' logo is also present in the bottom right corner.

Login and password change page

Shows Account holder's details

Shows history of downloaded titles

Tap here to amend bookshelf settings

Users will need to be connected to the internet to change password or update their account information

Windows PC: Account and Setting page



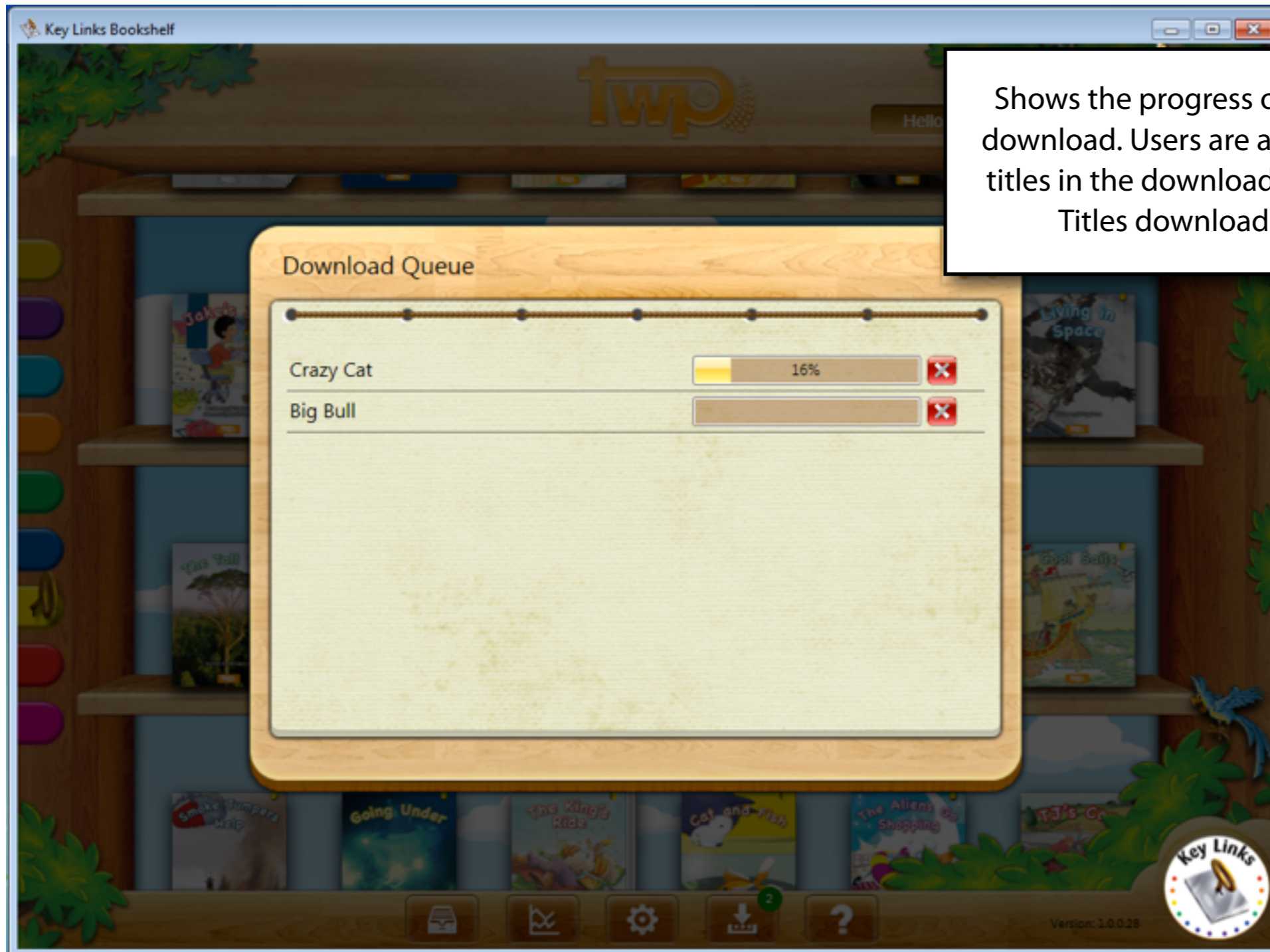
Adjust how fast the page turns and narration on each spread starts in "Read to Me" mode

Users may select the narration speed

Refers to data sync for the User Completion Report

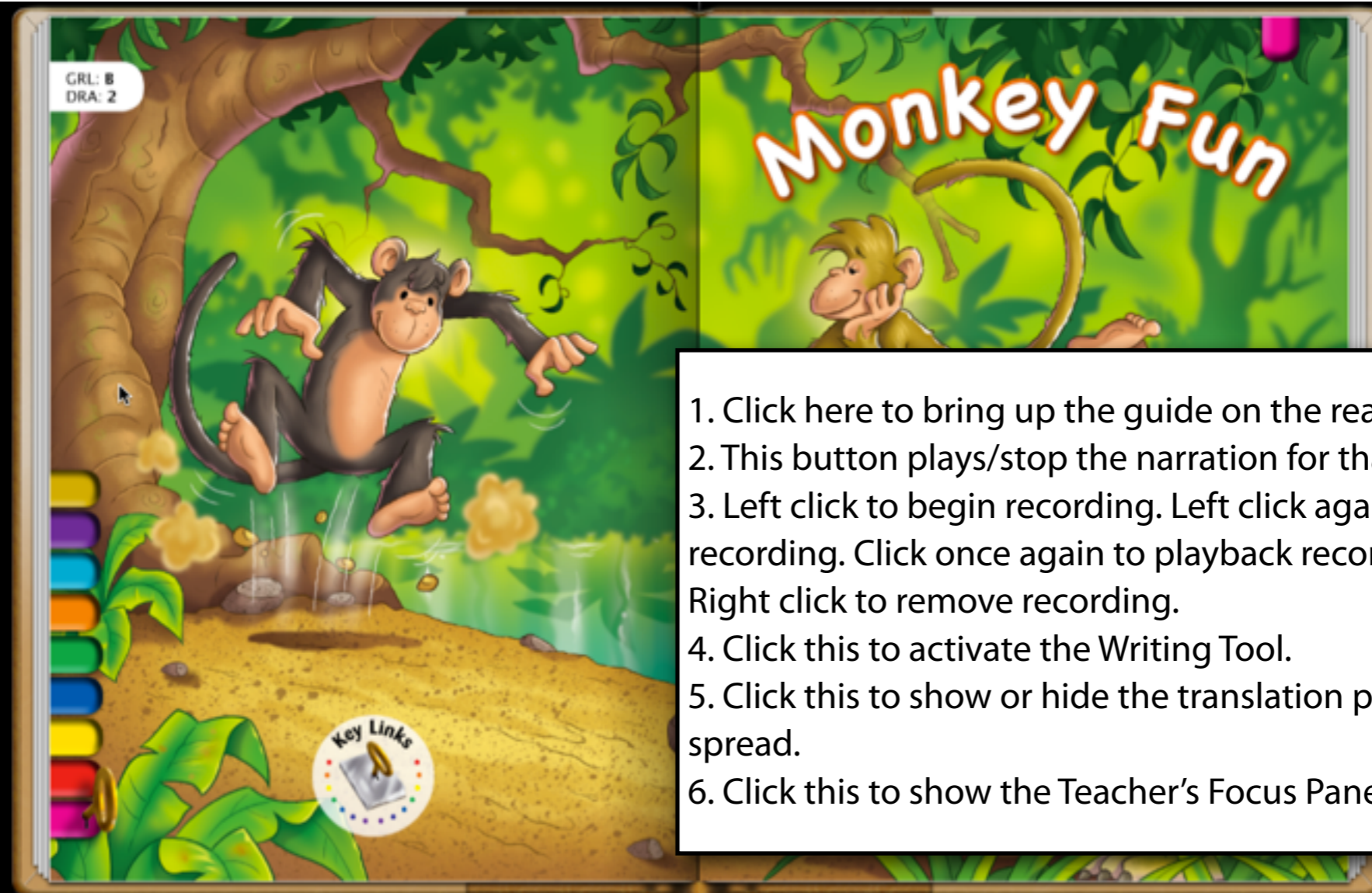
For users who have a limited device login on a single account

Windows PC: Download Queue



Shows the progress of selected titles for download. Users are able to select up to 5 titles in the download queue at any time. Titles download one at a time.

Windows PC: Features



1. Click here to bring up the guide on the reader controls.
2. This button plays/stop the narration for that spread.
3. Left click to begin recording. Left click again to stop recording. Click once again to playback recorded audio. Right click to remove recording.
4. Click this to activate the Writing Tool.
5. Click this to show or hide the translation panel for the spread.
6. Click this to show the Teacher's Focus Panel.

Close title and return to bookshelf

Minimise page window

Page thumbnail view

1. Information

2. Play/Stop Narration

3. Record/Playback

4. Writing Tool

5. Translation

6. Teacher's Focus Panel

Overview of Features



iPad



Android Tablet



PC

Features

Narration with text highlighting

•

•

•

Storytelling Mode

•

•

Record & Playback

•

•

•

Animation Control (On/Off)

•

•

Writing Tool

Scribble & Type

Scribble & Type

Type

Interactive Whiteboard Mode (IWB)

•

•

Progress Viewer

•

•

•

Offline Login

•

•

•

48 New Fluency Titles

•

•

Silver, Emerald, Ruby & Sapphire